

RIVANNA RIVER BASIN

LOCATION

ALBEMARLE COUNTY OFFICE BUILDING
LANE AUDITORIUM

401 MCINTIRE ROAD, 22902

9:30 – 11:30 AM

FRIDAY, SEPTEMBER 27 | FOURTH ANNUAL CONFERENCE



WELCOME

1. Panel Discussion on Before the Storm

Greg Harper – Albemarle

Roger Black – Fluvanna

Representatives from Greene and Charlottesville

- How has the Before the Storm research impacted your community?
- Was it useful?
- Have you implemented any elements?
- What needs to be updated?
- How can we all do a better job with stormwater runoff in the new climate environment?

2. Regional partners announcements regarding the River

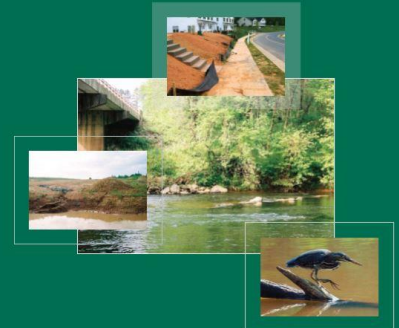
3. TJPDC update on the WIP III plans

Due to low water in the River, paddling activities are **cancelled**. All attendees are invited to attend the river celebration event at Rivanna River Company. It will be from **4 to 8 pm with live music by a local band Gallatin Canyon and food from Firefly food truck**. Beer and wine sales will be available as well.

All conference attendees and other Rivanna River enthusiasts to gather socially and share ideas.

Reducing Runoff from New Development

Recommendations for Fluvanna County
February 2010



Before the Storm: Reducing the Damage from Polluted Stormwater Runoff



Recommendations for
Albemarle County

Prepared by the Southern Environmental Law Center, the Rivanna Conservation Society,
and the University of Virginia School of Law's Environmental Law and
Conservation Clinic

Reducing Runoff from New Development

Recommendations for Greene County

